

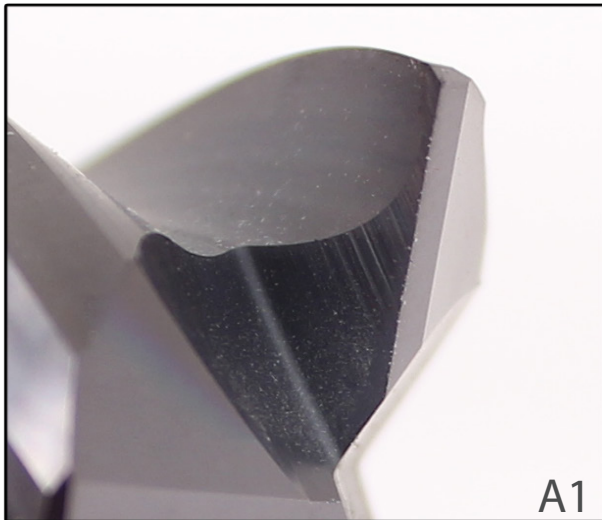
EDGE CUT™

What is

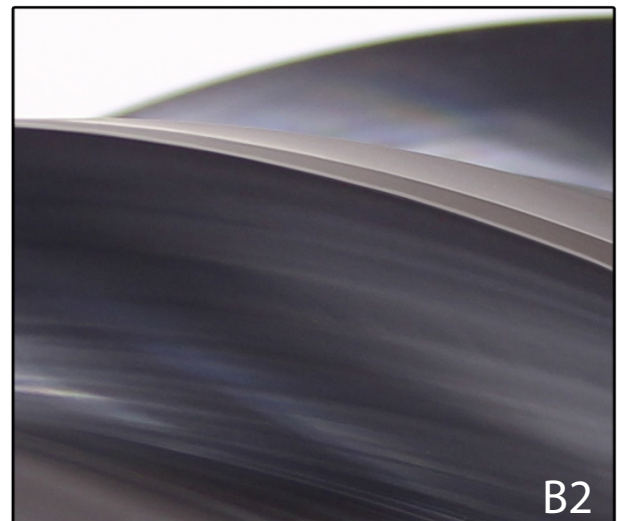
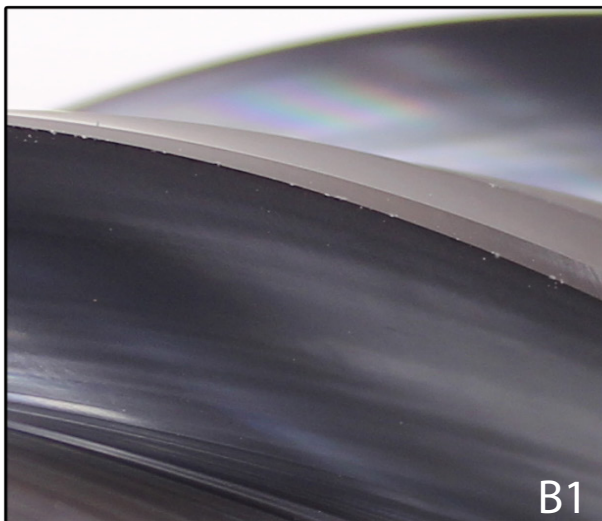
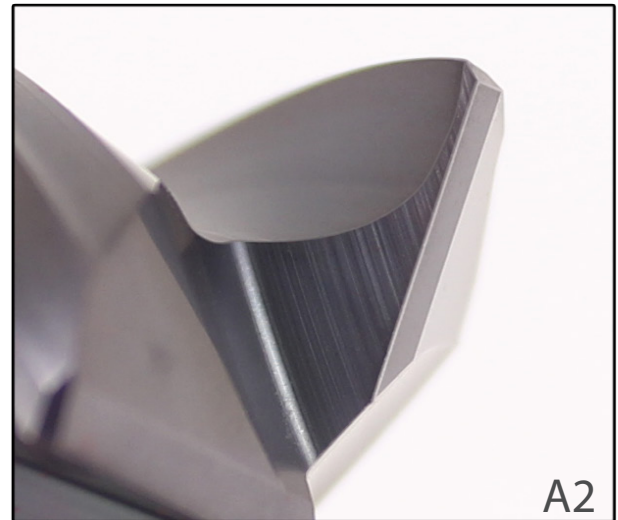
EDGE CUT™

EdgeCut is a **NEW** manufacturing process for cutting tools, implemented to provide our customers with superior cutter performance. The **EdgeCut** process consists of adding a controlled radius on the cutting tool's edge (also known as honing), to create an even and stronger cutting edge.

Before



After



Top Left (A1): Face of a coated endmill, prior to EdgeCut.
Bottom Left (B1): Cutting edge of a coated endmill, prior to EdgeCut.

Top Right (A2): Face of a coated endmill, after EdgeCut.
Bottom Right (B2): Cutting edge of a coated endmill, after EdgeCut.

Stronger edge. Faster Speeds. Longer Life.

Manufacturing Innovation

How does

EDGE CUT™

Improve Performance?

An even and stronger cutting edge...

- Reduces the risk of edge chipping and cracking, resulting in a longer tool life.
- Increases coating adhesion, providing excellent chip evacuation and wear resistance.
- Dissipates stress and force focus, allowing for increased speeds and feeds.
- Provides chatter-free machining, leaving a smooth surface finish on the part.

Why is

EDGE CUT™

Necessary?

EdgeCut has proven to be a key factor in the success of our cutting tools. Through our extensive testing, cutters with **EdgeCut** have outperformed tools without any edge preparation.

