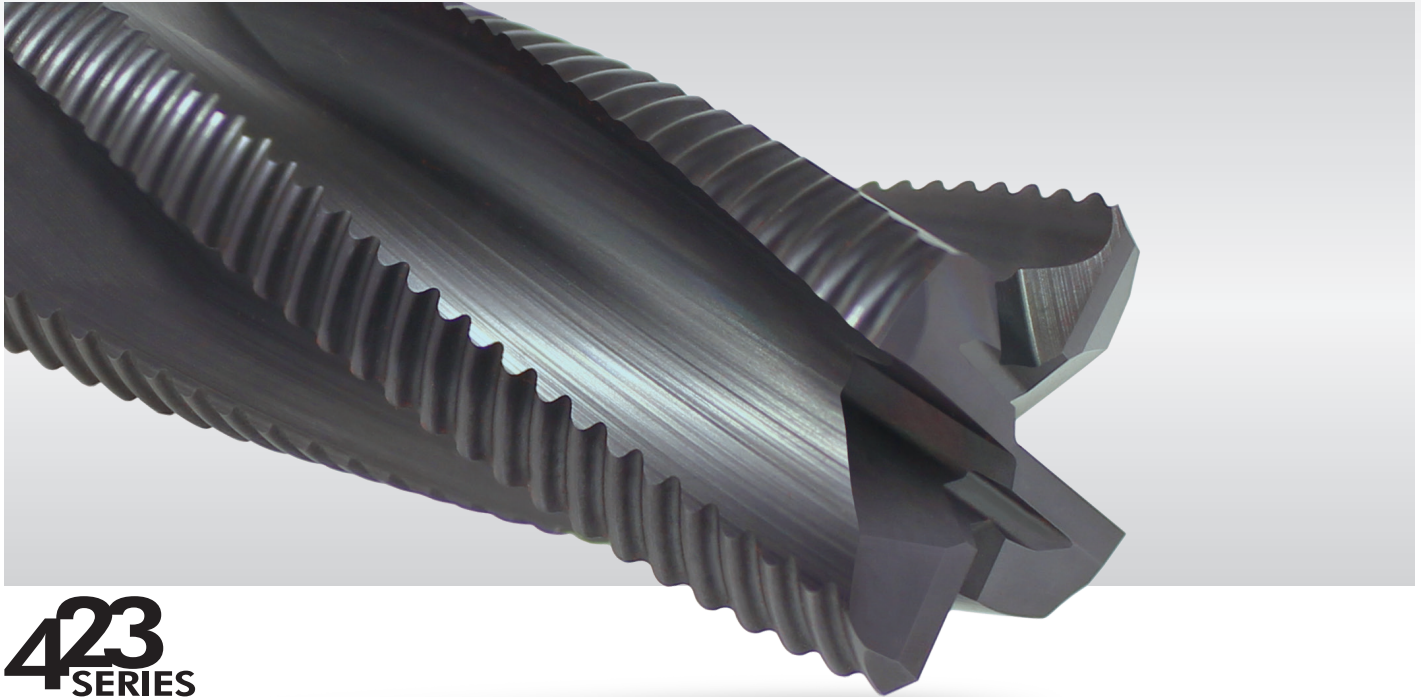




PRECISION CUTTING TOOLS, INC.

ENDMILLS

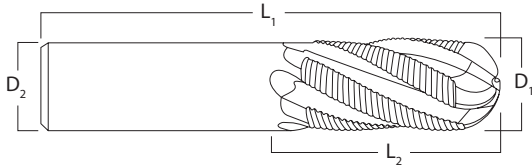
STANDARD ROUGHING ENDMILL



423 SERIES

4 Flute - Carbide Endmill Fine Pitch Rougher

The 423 Series is engineered specifically for difficult-to-machine materials. Its design consists of fine teeth, a 20° helix and Varianta® Supral coating; a design ideal for roughing operations of hard materials.



Varianta® Supral provides higher cutting speeds and excellent wear resistance.

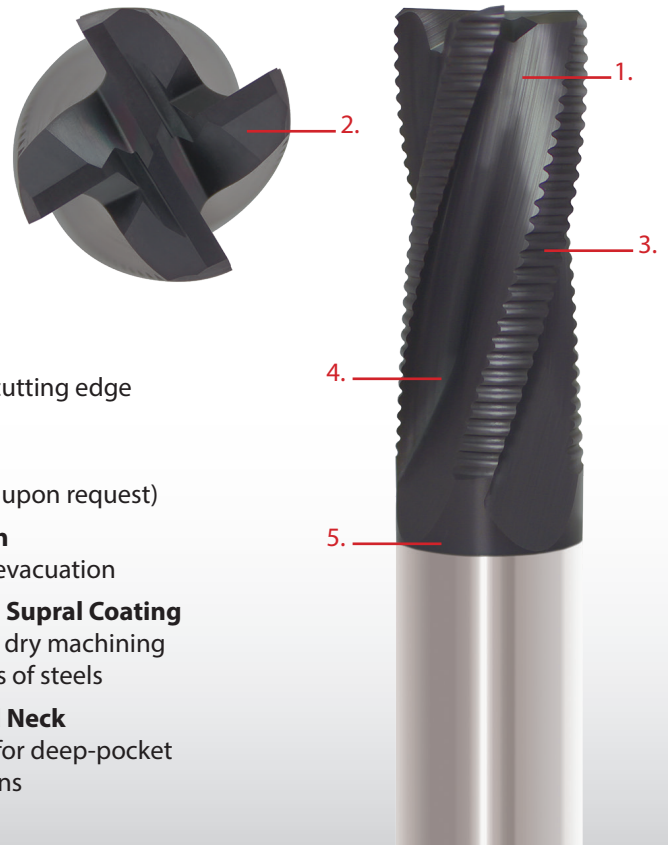


Benefits:

- Increased metal removal rates
- Higher speeds & feeds
- Increased productivity
- Longer tool life

Applications:

- Carbon Steels
- Alloy Iron
- Stainless Steels
- Hardened Tool Steels
- ...and their alloys



- 1. 20° Helix**
Stronger cutting edge
- 2. 4 Flutes**
Left-hand
(Available upon request)
- 3. Fine Teeth**
Fine chip evacuation
- 4. Varianta® Supral Coating**
For wet or dry machining operations of steels
- 5. Extended Neck**
Available for deep-pocket applications

Proudly Manufactured in the
United States of America



(562) 921-7898 | sales@pctcutters.com | www.pctcutters.com